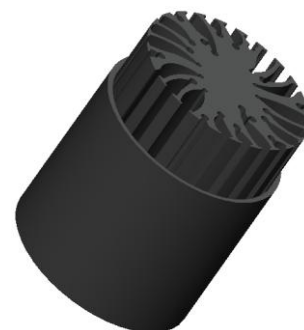


BuLED

XSA-390 LED light accessory to replace MR16 fittings by Xicato XTM

Features VS Benefits

- *XSA-390 LED light accessory includes one LED cooler and one LED housing to be assembled with Xicato XTM LED modules to replace MR16.
- * Mechanical compatibility with direct mounting of the LED modules to the LED cooler and thermal performance matching the lumen packages.
- * Thermal resistance range R_{th} 4.2°C/W.
- * Xicato Thermal Class **D** , (60° tilt angle, 40°C ambient) .
- * The cooler design with mounting holes foreseen for direct mounting of Xicato XTM Module .
- * Heatsink Diameter 48mm - Standard height 30mm , Other heights on request.
- * Housing Diameter 50mm - Standard height 45mm , Other heights on request.
- * Extruded from highly conductive aluminum.



*The XSA-390 LED light accessory Xicato Star Heat Sink is standard foreseen from a variety of mounting holes which allow direct mounting of all Xicato XTM LED modules and secondary optics on the LED heat sink.

*In this way mechanical afterwork and related costs can be avoided, and lighting designers can standardize their designs on a limited number of LED coolers.

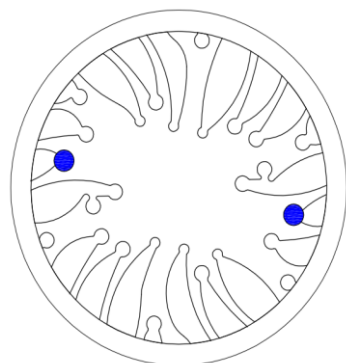
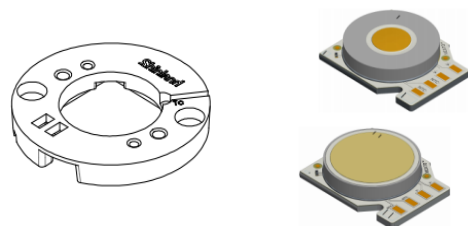
*Below you find an overview of Xicato LED modules which standard fit on the XSA-390 LED light accessory.

*MingFa performs thermal validation tests on each of the LED modules mounted on the LED cooler and publishes.

*This data in the Xicato Cooler thermal validation reports.

*For a full overview of available LED coolers for Xicato LEDs, please refer to the Xicato LED cooler overview on.

XICATO



XSA-390 LED light accessory ,Heatsink standard height 30mm for Xicato LED modules Mounting Options

Xicato XTM LED modules with Shinland Zhaga holder.

XTM19-8027-xxx ; XTM19-8040-xxx ;
XTM19-8030-xxx ; XTM19-V830-xxx ;
XTM19-8035-xxx ;

Direct mounting by Zhaga mounting holes with 2 screws M3 x 8mm; with Shinland Zhaga holder. Blue indicator marks.

BuLED

XSA-390 LED light accessory to replace MR16 fittings by Xicato XTM

Mounting Options and Drawings & Dimensions

Example: XSA-390-M3-B-2

Example: XSA-390 - **1** - **2**

1 Anodising Color

B-Black

C-Clear

Z-Custom

2 Mounting Options - see graphics for

details Combinations available

Ex.order code - 12

means option 1 and 2 combined

MingFa recommends the use of a high

Thermal conductive interface between the LED

Module and the LED cooler. Either thermal grease,

A thermal pad or a phase change thermal pad

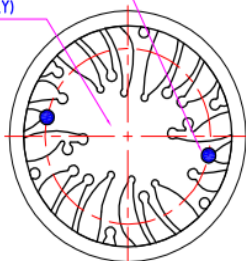
Thickness 0.1-0.15mm is recommended.

XICATO

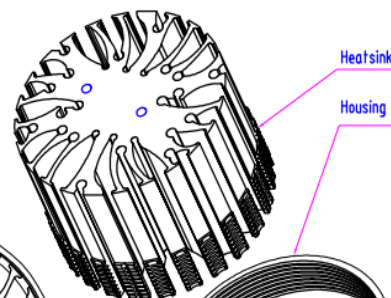
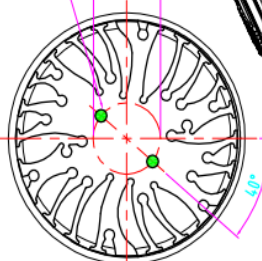
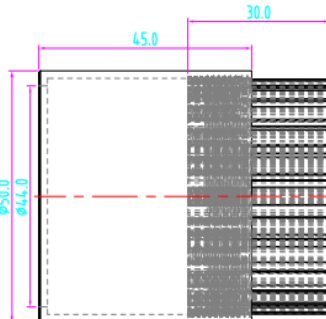
MOUNTING OPTION	PART NUMBER	THREAD	THREAD DEPTH
NONE	XSA-390-M3-B-N	NONE	NONE
1	XSA-390-M3-B-1	M3*0.5	6mm

XTM MOUNTING OPTION M3:
2X DRILL & TAP M3X0.5,
6mm DEEP MIN

0.05
(INSIDE THE DIAMETER
INDICATED, MODULE
SIDE ONLY)



MOUNTING OPTIONS 1
(2x) M3x0.5 ± 6mm @180°



Heatsink

Housing



Notes:

- Mentioned models are an extraction of full product range.
- For specific mechanical adaptations please contact MingfaTech.
- MingfaTech reserves the right to change products or specifications without prior notice.

Tel: +86-769-33252828 +86-769-33251919

E-fax: +86-(020)28819702 ext22122

Http://www.heatsinkled.com

Http://www.mingfatech.com

BuLED

XSA-390 LED light accessory to replace MR16 fittings by Xicato XTM

The thermal data table

	 <p>BuLED</p>
Model No.	XSA-390
Heatsink Size	Φ48xH30mm
Housing Size	Φ50xH45mm
Material	AL6063-T5
Finish	Black Anodized
Weight(g)	110
Thermal Wattage	12W
HeatsinkΘs-a²	22820
Thermal Resistance (°C/W)²	4.2

Pd = Pe x (1-ηL)		Heat sink to ambient thermal resistance Rhs-amb (°C/W)	Heat sink to ambient temperature rise Ths-amb (°C)
		XSA-390	XSA-390
Dissipated Power Pd(W)	2.5	6.2	15.5
	4.5	5.8	26.1
	7	5.2	36.4
	9.5	4.8	45.6
	12	4.2	50.4

